



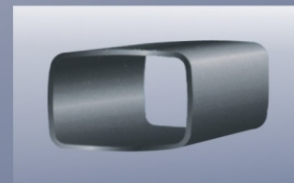
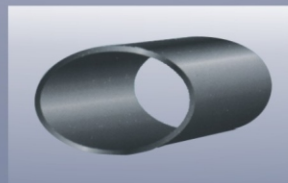
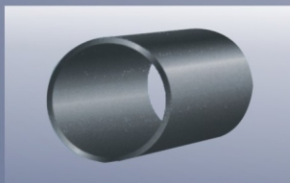
Godson Ultimate Bending Solutions

An ISO 9001 : 2008 Certified Company



GODSON

**4 ROLL MECHANICAL / HYDRO - MECHANICAL / HYDRAULIC
DOUBLE PINCH TYPE PLATE BENDING MACHINE
(Also Available with PLC / CNC Option)**



GODSON

Godson bending systems pvt. ltd.

ATIKA IND. AREA, MARG NO. 1, DHEBAR ROAD (SOUTH), RAJKOT-360 002 (INDIA)

Ph.: +91 - 281 - 2361467, 2361449, Fax: +91-281-2361873

Website: www.godson-india.com | E-mail: godsonindia@hotmail.com, info@godson-india.com



CRISIL
RATINGS





4 ROLL MECHANICAL/HYDRO MECHANICAL DOUBLE PINCH TYPE PLATE BENDING MACHINES

'GODSON' 4 Roll double pinch type machine is designed for bending light, medium & heavy gauge plates with double pinch and pre bending operations. This one incorporates a fixed top roll and 2 nos. side rolls and one bottom roll, all 3 are independently adjustable. This machine is with the same arrangement of 3 roll double pinch type machine but adds another bottom roll in between of two side rolls. This allows pre-bending for more closer area than pre-bending obtain in 3 roll machine. This is very much helpful while doing small diameter jobs. This machine is able to do symmetrical & asymmetrical bending works, moreover since it's double pinch machine which controls two edge pre-bending with one insertion of steel plate in the machine, for pre-bending is the way reduce the flat end of plate to minimum on the both two edges, This is accomplished by clamping the steel plate by top and central bottom roll and bending the clamped portion by side roll to the desired radius. Central Bottom rolls and two side rolls are lifted individually by individual Gear Box & Electric Brake motor, in mechanical version the same is carried out by Hydraulic Power Pack unit & individual hydraulic cylinders in hydro mechanical version.

Benefits of 4 Roll Bending Machine :

- ◆ Plate handling easier as plate is fed horizontally.
- ◆ Less dependence on operator skill for multi-radii profiles.
- ◆ Best possible alignment of the plate edge against rear side roll.
- ◆ Pre-bending may reduce the flat edge up to one plate thickness.
- ◆ Effective plate gripping-feeding throughout bending cycle.
- ◆ Versatile-suitable for thin & thick sheets, small and large diameters.
- ◆ High productivity and accuracy.
- ◆ No need to travelling crane during bending process.

The Inter Changeable Top Roll.

When it is necessary or desirable to roll material to diameters smaller than Could be possible with standard top roll, an interchangeable top roll of the Required size can replace the standard top roll. Change over time is very less. The cost as really low and in many cases the need of buying a another machine Can be avoided.

- ◆ GODSON 4 Roll machine is ideal for following applications....

Submersible pump stainless steel body cover, Silencers, Exhaust pipes, Catalytic converters, Air tanks for truck air brakes and painting compressors, small water heaters, Chimney flues, Small LPG & CNG cylinders, Fire extinguishers, Solar water heater tank and when small diameters are necessary & required.

CAPACITY

Width : 500 m.m. to 2000 m.m.

Thickness : 1 m.m. to 6 m.m.

